

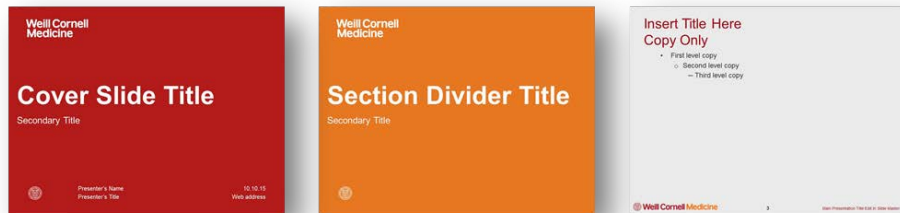
New Templates



Masterbrand PPT Templates

As an extension of the Weill Cornell Medicine brand identity standards, four Masterbrand PowerPoint templates have been designed for use. They are available for download at: <http://brand.weill.cornell.edu>

Color:



Gray:



Photo:



White:



Co-branded PPT Templates

As an extension of the Weill Cornell Medicine brand identity standards, four Co-branded PowerPoint templates have been designed for use. They are available for download at: <http://brand.weill.cornell.edu>

Color:



Gray:

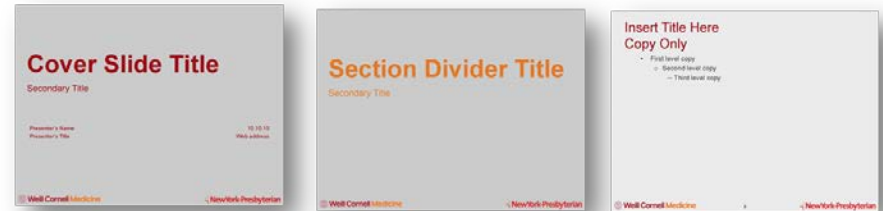


Photo:



White:



Selecting a PPT Template

Consider the following criteria when choosing a template:

1. Audience

2. Content

3. Distribution format

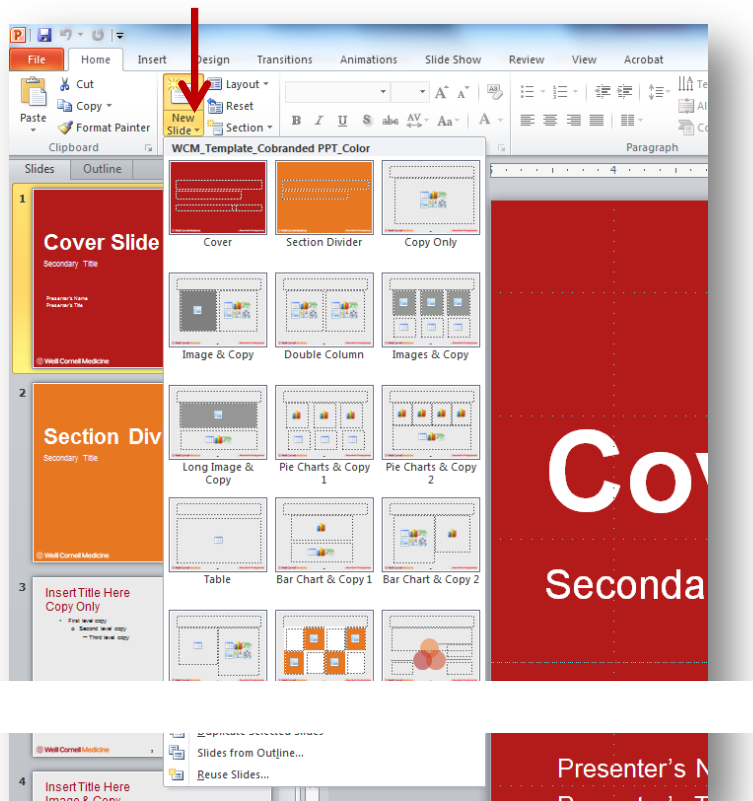
4. Location

Location	Recommended Template
Olin Hall & Uris Auditorium (Low-Quality Projectors)	White or Gray
Belfer Research Building & Weill Greenberg Center (High-Quality Projectors)	Any
Other Locations (Low-Quality Projectors)	White or Gray
Other Locations (High-Quality Projectors)	Any

Using the Templates

Double click the file to create a new presentation using the selected template. Many common slide formats are displayed as examples. It is recommended that you use these as the starting point for new presentations.

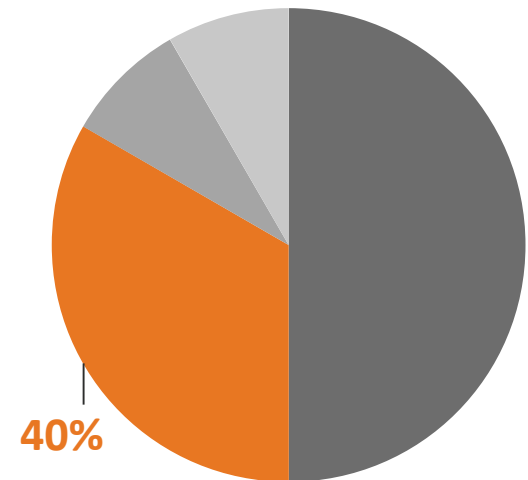
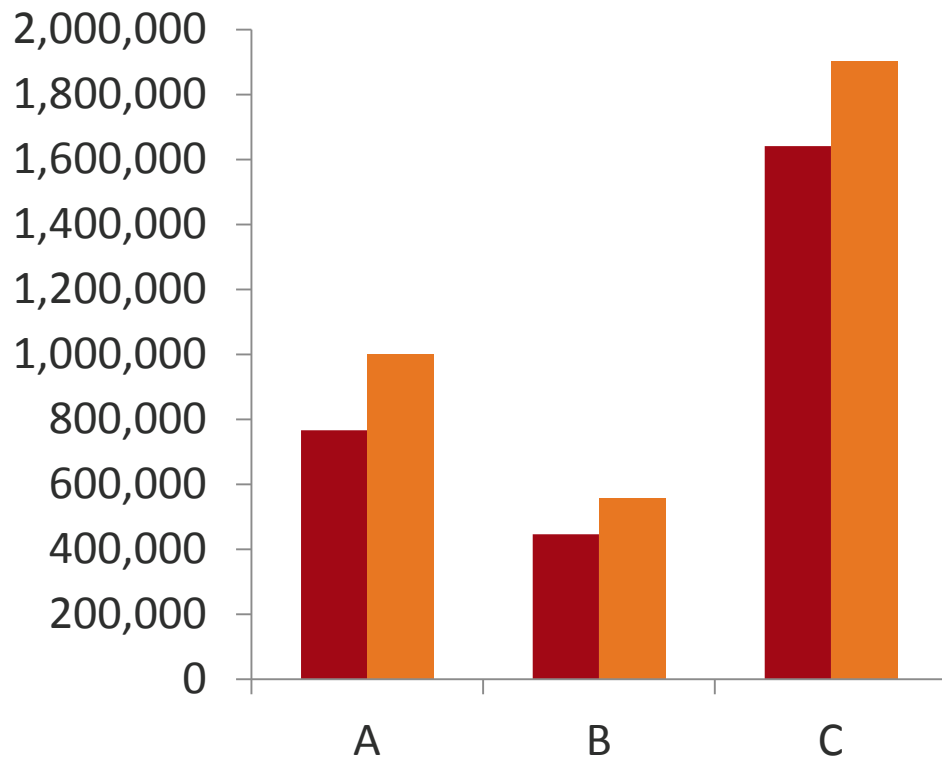
To insert a new slide, click the small arrow within the “**New Slide**” button in the toolbar, and select the desired slide format.



Formatting Charts & Graphs

To change the colors or style of a chart or graph, click on the image and select “**Chart Tools**” in the top menu.

Double click individual bars or pie sections and select “**Fill**” to change the color of an individual data point.



Frequently Asked Questions

- How do I edit the **slide master**?
- How much **color/text** is too much?
- What **file format** should I use when presenting?
- What is the most efficient way to **print a presentation**?



**Weill
Cornell
Medicine**